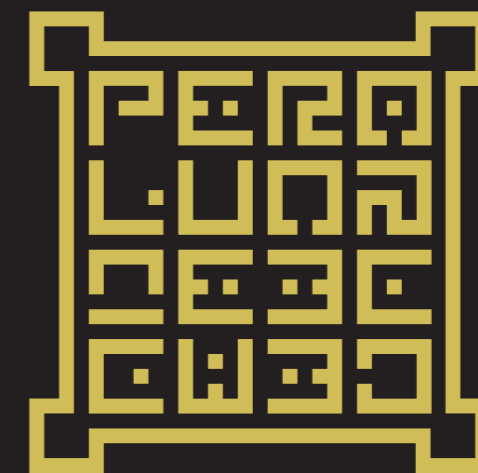


PER BRUCEM AD LUCEM

THE VOYAGE OF ORUAM

PER BRUCEA AD LUCEA

THE VOYAGE OF ORUAM



Jewels and Text
IZNAV ORUAM

Photographs
GIACOMO ARTALE

FIRENZE

CONTENTS

PREFACE XI

THE VOYAGE OF ORUAM

PART ONE

THE PILGRIM XIV
THE DEATH XVI
THE BOOK XVIII
THE WIND XX
THE LABYRINTH XXII
THE EAGLE XXIV
THE OWL XXV
THE MIDDLE WORLD XXVI

THE JEWELS

NIGHT AND DAY XXX
CULMEN TERRAE XXXI
CRUCEM XXXIV
GLOBUS XXXVI
JERUSALEM XXXVIII
IMAGO TEMPLI XL
ECCLESIA XLII
LOTUS XLIV
SPHINX XLVI
PYRAMIDE XLVIII

THE VOYAGE OF ORUAM

PART ONE

THE SONG OF LIGHT LII
THE END LIV
THE CUP LV
THE TEMPLE LVI

APPENDIX

Symbolica LX, LXI
Alphabet LXII

Acknowledgments LXIII
Biography LXIII
Author Signature LXIV



Copyright © 2010 by Iznab Oruam.

All right reserved.

PER CRUCEM AD LUCEM and PER CRUCEM AD LUCEM logo

are trademarks and registered trademarks owned

by Iznab Oruam

No portion of the work may be reproduced in any form without written permission of
the copyright holders.

www.iznavoruam.it

www.giacomoartale.it

The Analogy is the key to the secrets of nature,
the only possible mediator
between the Visible and the Invisible,
between the Finite and the Infinite.
To find the exact scale of the Analogies
And then build Archetypes
is to lay the foundations of Knowledge and Faith.

THE VOYAGE OF ORUAM

PART ONE

THE PILGRIM

I

I want to be as strong as the Earth,
free as the Air,
brave as Fire,
and deep as the Waters
of all rivers and all the seas.



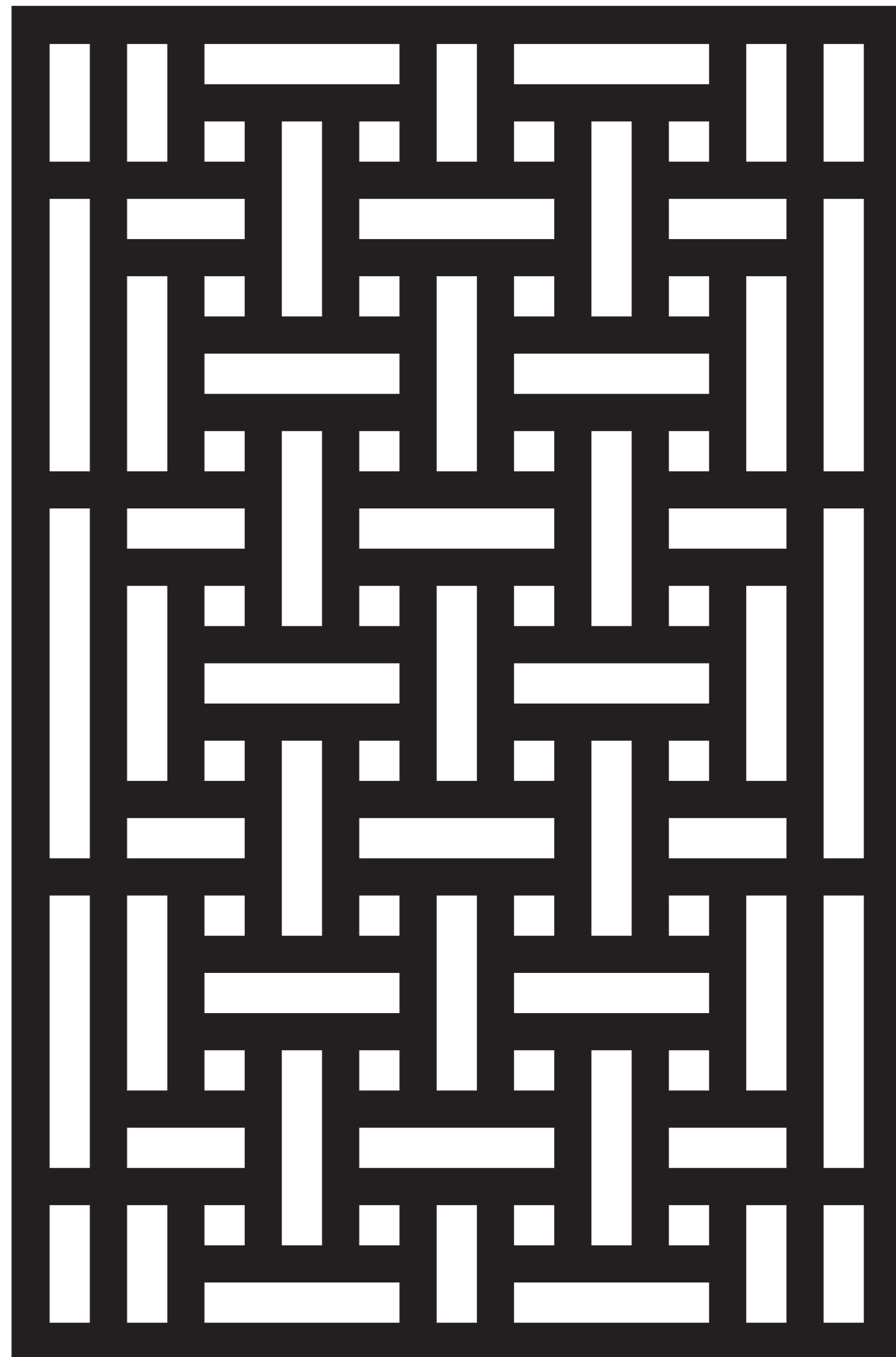
THE DEATH



Dlin dlon dlan.
Only Death can help me.
Dlin dlon dlan.
Only Death will help me.

Dlin dlon dlan.
Only Death can search for me.
Dlin dlon dlan.
Only Death will find me.

Dlin dlon dlan.
Only Death can save me.
Dlin dlon dlan.z
Only Death will save me.



THE BOOK



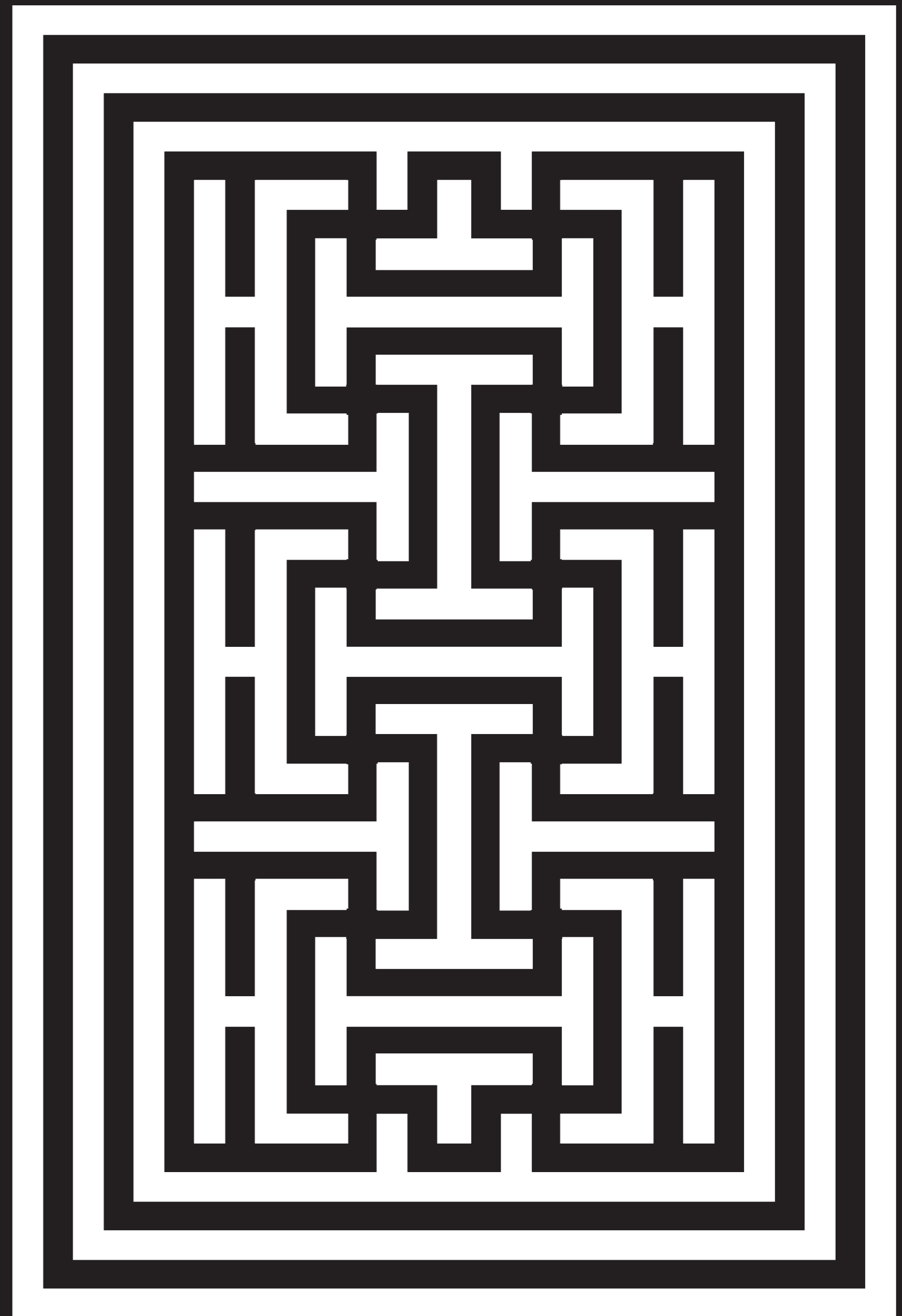
Know to dare.

Dare to want.

Want to have.

To be silent is to reign.

So it is written.



THE WIND



Rests on fields
and strokes the tips of the rocks.

Lights the Fire

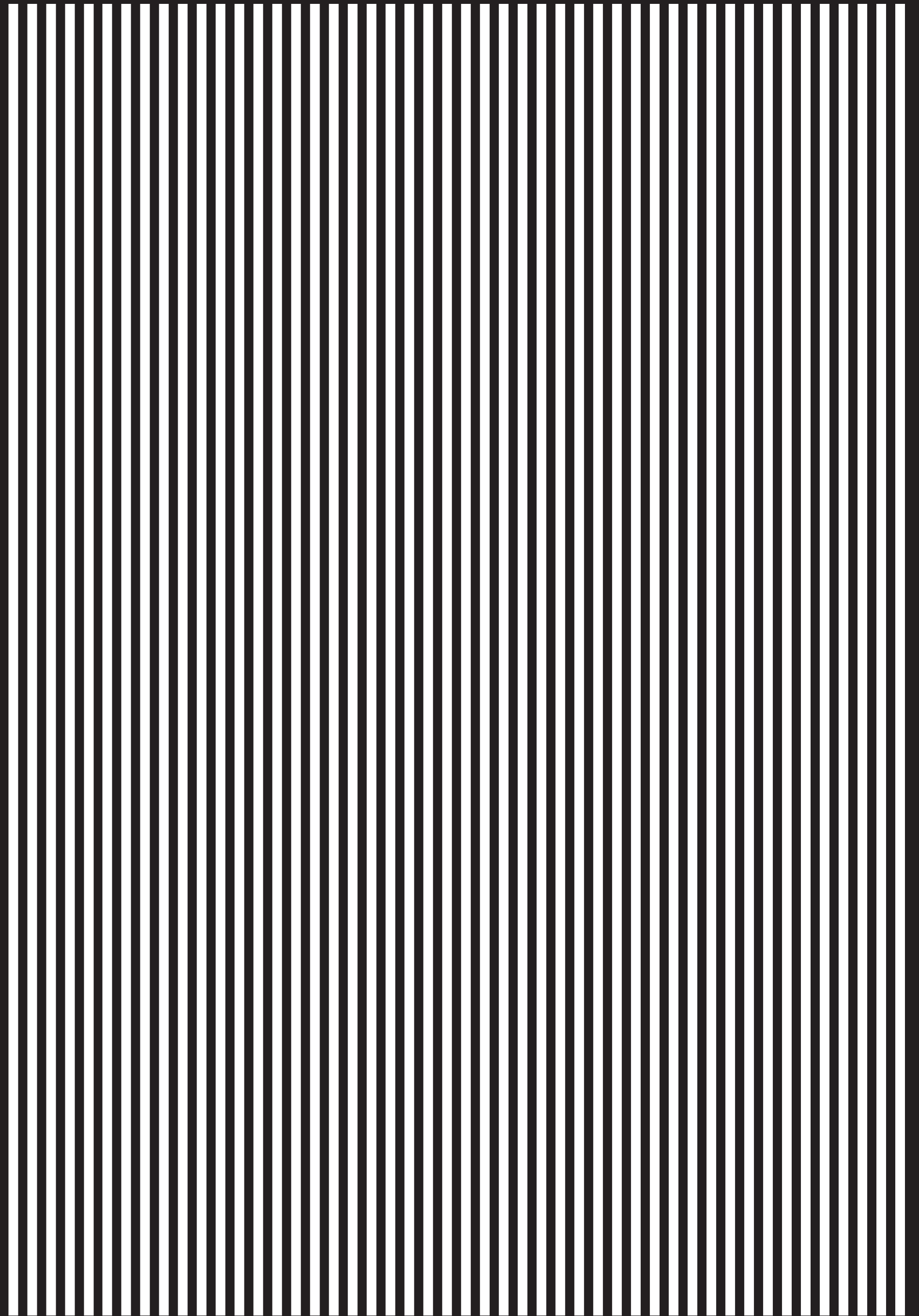
and runs.

Hisses your Death
and then chants it over.

Discover
from which directions it comes.

You know where to go.

He is the Wind.



THE LABIRINTH



When Time was Space,
and the Wind, Light.
The Night was the Day
and the evening bled tears of rain.

The Word
from the Wind
became the sand
from which they built empires.

Finally, cement.
Where, imprisoned forever,
lies the Soul.



THE EAGLE



I am me,
the Royal Eagle.
My shadow is larger than the sky for you,
wherever you grovel across this land of mist,
towards the only North,
which is the South.
My pupils that see
the invisible
two wing strokes from the sun
No longer wish to seek your time-ravaged face,
With its skinless cheeks and vacant eyes.

I am me,
the Royal Eagle,
the sky is me,
Nothing moves, not even the wind,
without my wish.
I will protect you.
I will indicate direction with my shadow
and the strength of my talons.
Now that you are nearing your goal,
where the mirage is real,
and time is Alone,
You need me no longer.
I leave you to your misery.
I am high in the sky

THE OWL



The guardian of Darkness,
for whom the twilight is dawn,
and the night is lighter than the day,
will care for your Soul
and
decide,
Drinking from its cup
your blood,
to open the doors
of mystery and truth,
or leave you bare bones
in the cemetery of the world.
Where water does not quench,
air does not breathe,
land never rests,
and fire does not burn.

THE MIDDLE WORLD



Now that you are lost in the

Middle World,

your destiny is

Water.

Raise you eyes Oruam.

Raise you eyes

to the sky for the last time.

Go ahead, go right, go left Oruam.

Back, wait, transcend, rise, drop, sleep:

you die.

Hide yourself, pray,

listen.

Walk Oruam, walk, do not stop...

Time is stationary.

Fame is the misery of Earth.

The Wind speaks to Angels

And God is a Man.



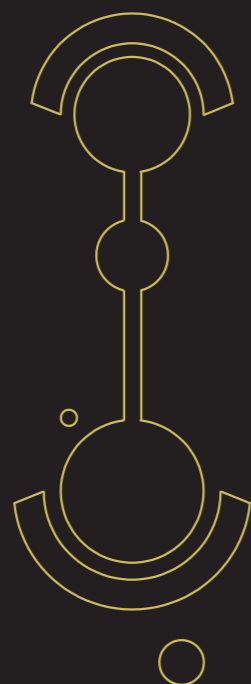
Precious stones and diamonds
are the unknown riches
of the unconscious and the Soul.
Their structure and geometry
is the Word of God.
Gold is the perfect metal,
mineral Light,
Esoteric knowledge.

The regal combination
binds Earth to Fire,
transforming
the secret alliance between
Soul and knowledge into
Light.

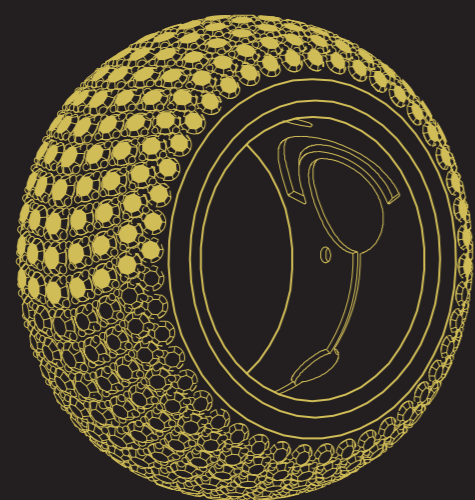
THE JEWELS

NIGHT AND DAY

White Gold 18carat, blue zapphires and white diamonds.



The engraving inside the ring.



Constructed in four parts of white gold and mechanically assembled,
A non-visible steel ball bearing is inserted inside the ring, rotating it on its axis.
White diamonds and blue zapphires are alternate,
to indicate duality and movement.

The seal is inside the ring.

161 white brilliant cut diamonds
161 blue cut diamonds, weights:2.39carats.

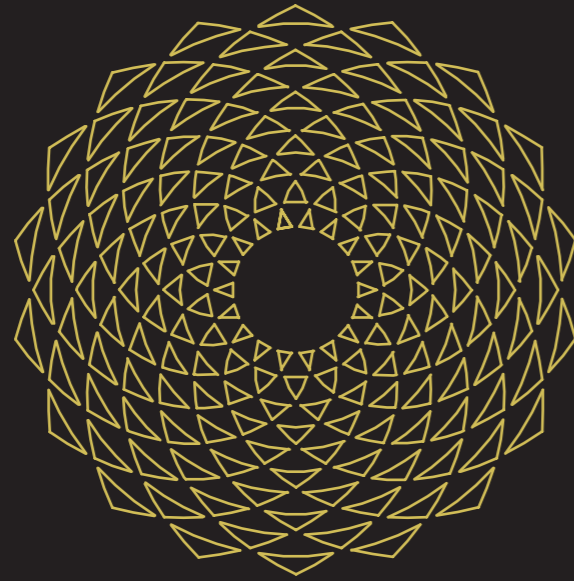


In the beginning
the World was One,
colorless and static.
God, Cruel and Just,
separated equally in
Two parts.
One was given the name Night ,

the other Day,
They were sent into the Universe
to seek forever their love for each other.
Since then,
Night follows Day
and
Day follows Night.

CULMEN TERRAE

Yellow Gold 18 carat. White diamonds.



The inside of the ring is pierced.



An inverted Dome is divided into eight equal parts,
On top of the Dome is set a magnifying glass,
which magnifies the vision of the Dome,
but only from a perpendicular view.

The seal is on the base of the ring.

80 brilliant cut diamonds, weight: 1.67 carats



The Door,
at the apex of the Dome
is the axis of the World.
In the depths of the well is Heaven.
What is Below is as Above,
as Above is Below,

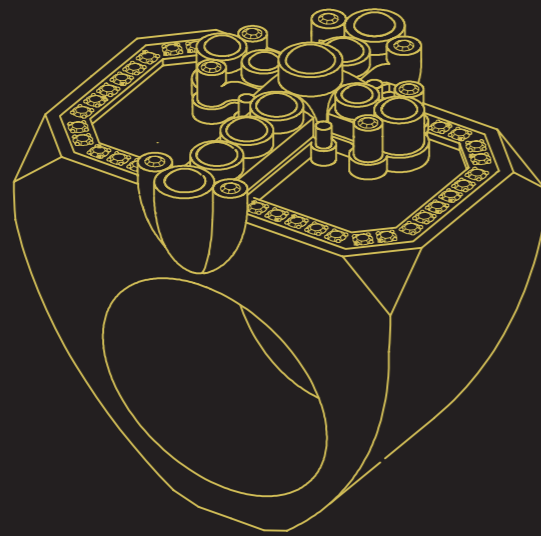
from this relationship of equality
we obtain the Ternary,
from the fecundity of the Ternary
the Quaternary takes shape,
which is the key to all forms and
Geometries.

CRUCEM

Red gold 18 carats, rubies, white diamonds and enamels.



The inside of the ring is pierced and red enameled, taken from a rose window of Chartres Cathedral.



Silk engravings on the side of the Cross, which is studded with rubies, White enamel and white diamonds are at the base of the Cross. There is a snap-lock that reveals a navette of ruby in the center of a floor of a secret room, which symbolises the blood of Jesus Christ.



The ring stands on its base.

The seal is on the base of the ring.

12 rubies cabochon cut, weight: 1.39 carats.
126 white brilliant cut diamonds, weight: 2.06 carats.
Navette cut Rubi, weight: 0.30 carats.

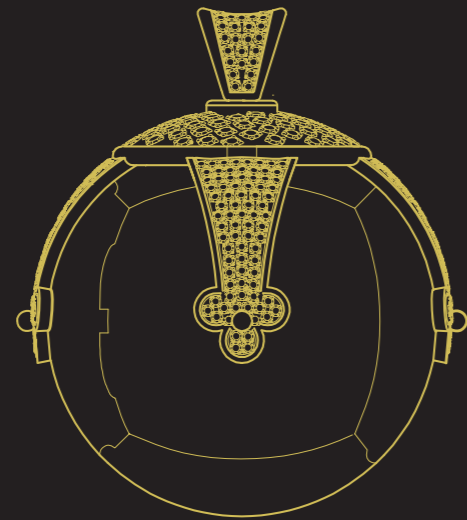


On the path to the Center,
the Cross is the royal instrument.
To divide by the poles and
gather in the center
is the Method.

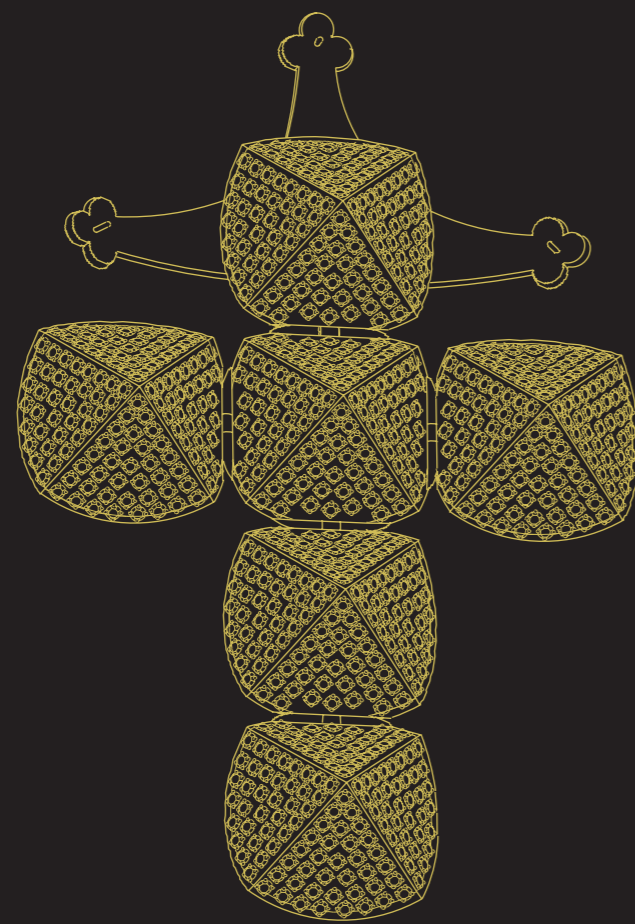
By going up and going down,
then by going left and going right
we arrive at the Crucible.
Here, Beauty and Tragedy are One
and Indivisible.

GLOBUS

Red and White Gold 18 carat.
White diamonds and rubies.



The sphere can be opened
unfolding the four arms hinged to the upper cup,
giving shape to the Cross
of six equal pyramids,
held together by a system of hinges.



128 rubies, weight 2.63 carats
940 brilliant cut diamonds, weight 13.76 carats.



The square,
Matter,
turned in upon itself,
to produce the circle,
Spirit.
The rim, spinning on its axis,
forms the Sphere,
the Universe.

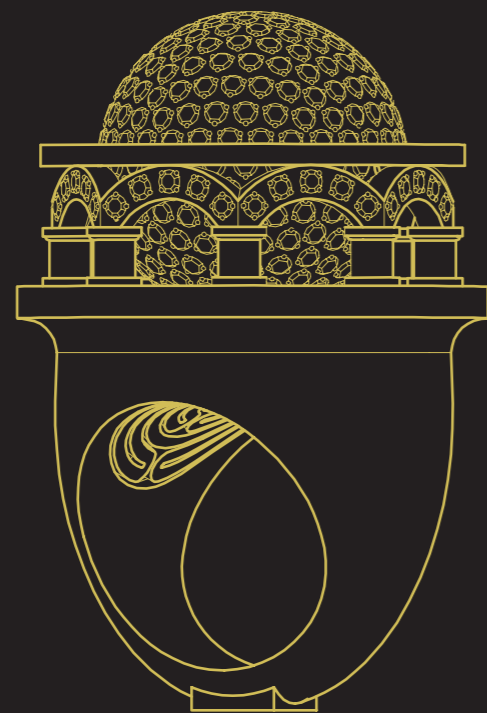
The composition of
the Sphere
reveals six pyramids,
forming
the Cross.
Symbol of Light,
emblem of
Tragedy.

JERUSALEM

Red and White Gold 18 carat
White diamonds.



The internal design of the ring is in the form of the Labyrinth to be found in the Cathedral of Chartres. Here the Pilgrims journey on their knees to symbolise the pilgrimage to the Holy Land.



A sphere set with diamonds, rotating in all directions.

The ring stands upon its base.

The seal is on the base of the ring.

412 white brilliants cut, diamonds, weight: 2.95 carats.



On their knees,
from Chartres to Jerusalem,
through the Labyrinth.
The Pilgrims journey,
from Death to Resurrection,
from Darkness to Light.
Solely for those who possess
courage and will.

It is the path to the Holy Land,
the centre of the World,
where the battle between Light and Shadow,
Sacred and the Profane
is played out.
The Victors
will be consecrated and gifted with
the vision of Light.

IMAGO TEMPLI

Red, Yellow, Rose, Gold 18carat,
Silver burnished base and rubies, sapphires, diamonds.



At the base of the ring is a Grecian style rose gold frame.
On the sides are two levers that allow access to the components.

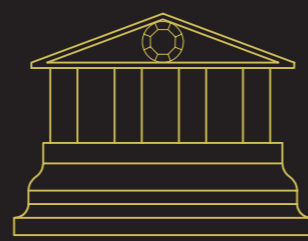
The facade of "Santo Spirito" is in yellow gold, a Rosette set with Rubies is above the door,
over which a single Diamond is set.

The "Parthenon" is in rose gold, with two diamonds set either side of the central Timpano.

The "Taj Mahal" is in red gold, with one door set with Rubies,
the other door has sapphires. The window is set with Diamonds.

The two movable white gold bezels are set with Diamonds
and engraved "Alpha" and "Omega"

The Beginning and the End of the
Symbolic Alphabet.



The interchangeability of the center parts
is Equality and religious syncretism.

The ring stands on its base.

The seal is on the base of the ring.

4 rose cut diamonds, weight: 0.22 carats
2 rubies cut cabochon, weight: 0.32 carats
6 rubies carrè cut weight: 0.48 carats
78 brilliant cut diamonds champagne color, weight: 1.41 carats
1 Rubi oval cut, weight: 0.53 carats
1 sapphire oval cut, weight: 0.63 carats

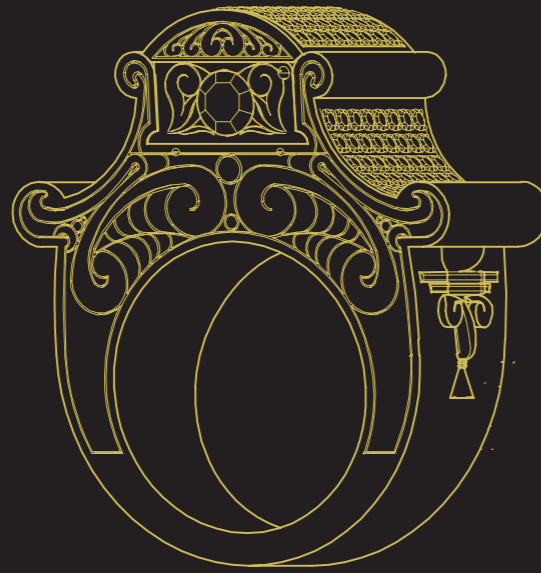


Temple,
House of God on Earth.
Your length extends from East to West.
Your width from South to North,
your height reaches from Nadir to Zenith..

Santo Spirito, Taj Mahal and Parthenon.
Human endeavors
to honour their
God.

ECCLESIA

Red, Yellow, White Gold 18 carats.
Rubies, sapphire, white diamonds.

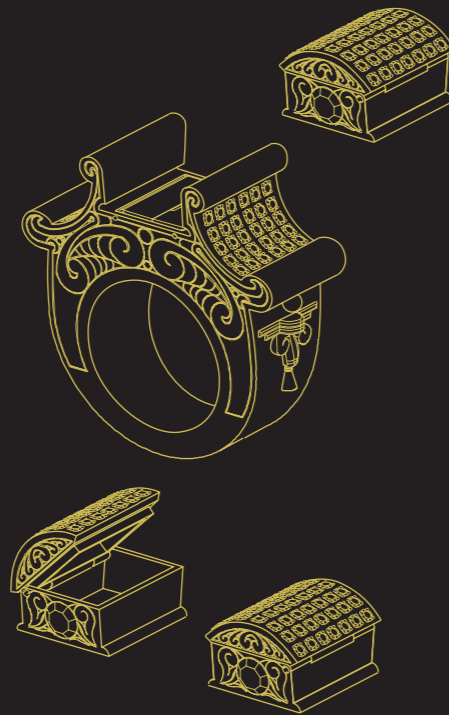


The facade of the ring is a baroque study
of the Church of Santo Spirito in Florence.

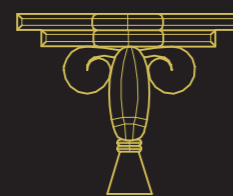
The Three chests are interchangeable
by the movement of a knob on the right side of the ring.

Yellow gold chest with rubies set on the lid and on two sides
White gold chest with diamonds set on the lid and on two sides.
Red gold chest with sapphire set on the lid and on two sides.

A secret door is hidden on the flat base of the ring,
to be opened with a fingernail.



Seal on the base of the ring and on the bottom of the chest.



92 brilliant cut diamonds, weight: 1.36 carats.
32 rubies, weight: 0.80 carats.
32 sapphires, weight: 0.80 carats.



Sacred or Profane,
Royal or Commoner,
Chance or Miracle,
Past, Present
or Future,

Choice is the right of the King.
The chests separate and protect
that which is precious
from
the World.

LOTUS

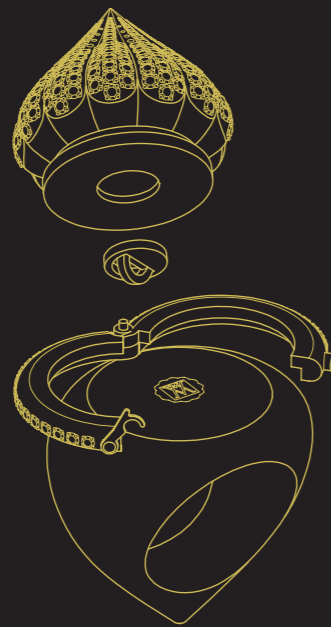
Rose, White, Brushed gold 18 carat.
White diamonds.



The inside of the ring is pierced.



The ampolla is divided in ten equal parts with diamonds sets in the segments.
On the circumference of the openable ring nut are sets diamonds.



The ampulla is removable,
by raising the latch and rotating the ring hinged at the base,
the bulb is extracted.

Underling the ampulla there is a screw threaded with recessed handles.
After removing the screw, you can wear the Perfume.

The seal is on the base of the ring.

252 white brilliant cut diamonds, weight: 2.14 carats.

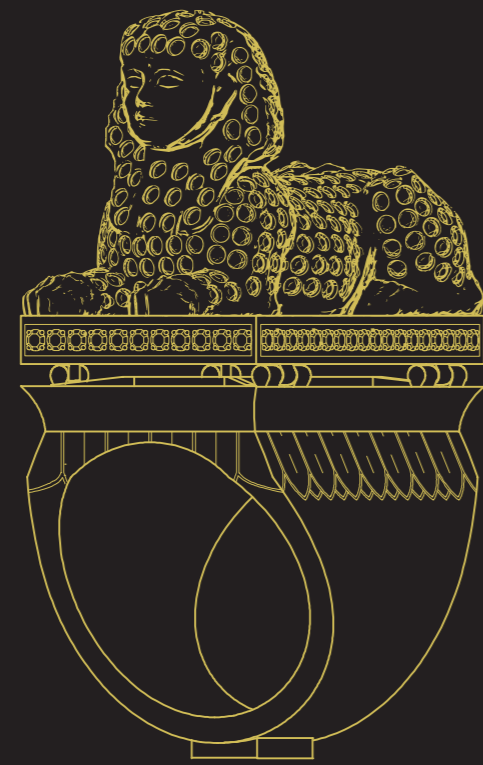


A drop of dew and the aroma of the East.
The wind that caresses a flower
and causes the leaf to sigh.
A memory of wakening
in Eden,
to the scent of a Rose.

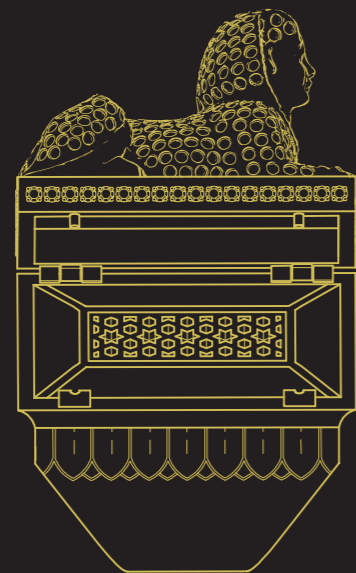
The incorruptible Incense
that bestows upon us the knowledge of the Aesthete,
revealing the elusive virtues of the Soul.
Reality is transcended
while you are entering silently unto the
Temple.

SPHINX

White and rose gold 18 carats.
White diamonds.



The Body and base of the Sphinx are in white gold,
set with brilliant cut diamonds and pavé setting technique.
Base of the ring in rose gold.



Opening snap with two sides hinges.
Red jasper frame around the secret inner door.

The seal is on the base of the ring.

The ring stands on its base.

205 white brilliant cut, diamonds, weight: 3.51 carats.



The Strangler.
It's gaze contemplates the single point of the sun's rising.
Awaits at the side of the road
to interrogate the Enigma,
strangling the travelers who cannot answer
with absolute Truth.
It has the serenity of certitude,

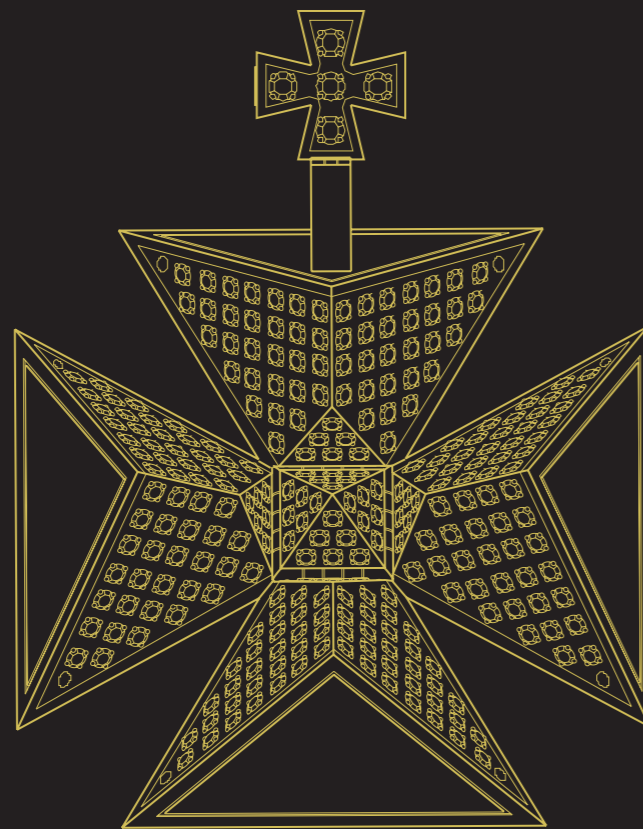
whose fate is Apocalypse.
Seated on the Earth, as set on diamonds
it is the Guardian of the prohibited threshold.
Where the lines of shadow and light fall,
between the paws of the Sphinx,
The Secret of Atlantis.
is to be found.

PYRAMIDE

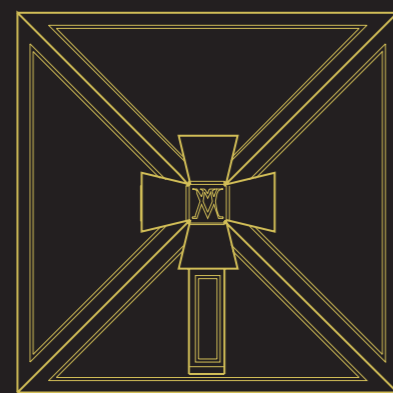
Rose and White Gold 18carat.
White diamonds.



On the top of Pyramid there are four hinges,
one on each side.



Releasing the small Cross on the base, the Pyramide opens,
giving shape to a square Cross:
with a small central Pyramide and hidden and movable harness,
where a chain may be attached.



Seal on the base of the small cross.

205 white brilliant cut diamonds, weight: 3.51 carats.



Every science derives from it,
all science leads to it,
To comprehend light is to compose the Pyramid.
The cut of the stones is the order of Chaos,
the base is Earth, the tip, pure Fire.
Inverting the Pyramid
the Mystery reveals.

The unique
and absolute reference point of matter,
of the relation between
Earth and Sky,
Cube and Sphere.
Reveling how to be apart
and to transcend it.

THE VOYAGE OF ORUAM

PART TWO

SONG OF LIGHT



The Light is before you.

The Light is behind you.

The Light is upon you.

The Light is below you.

The Light is all around you.

You are the Light.

So it is sung by Angels.



THE END



You have come to the End,

Oruam,

where you can never leave,

nor ever stay.

There is no West, nor East,

North nor South.

Only the

Great Spirit.

Here,

the Thief, the Priest,

like the Dog and the Snake.

Night and Day.

The Good and the Murderer.

The Holy and the Idiot,

are respected and honored,

like a King.

THE CUP



Drink from the cup

Oruam,

This wine

is the blood of the trees,

the wind of sorrow,

and the tears of heaven.

Listen.

THE TEMPLE

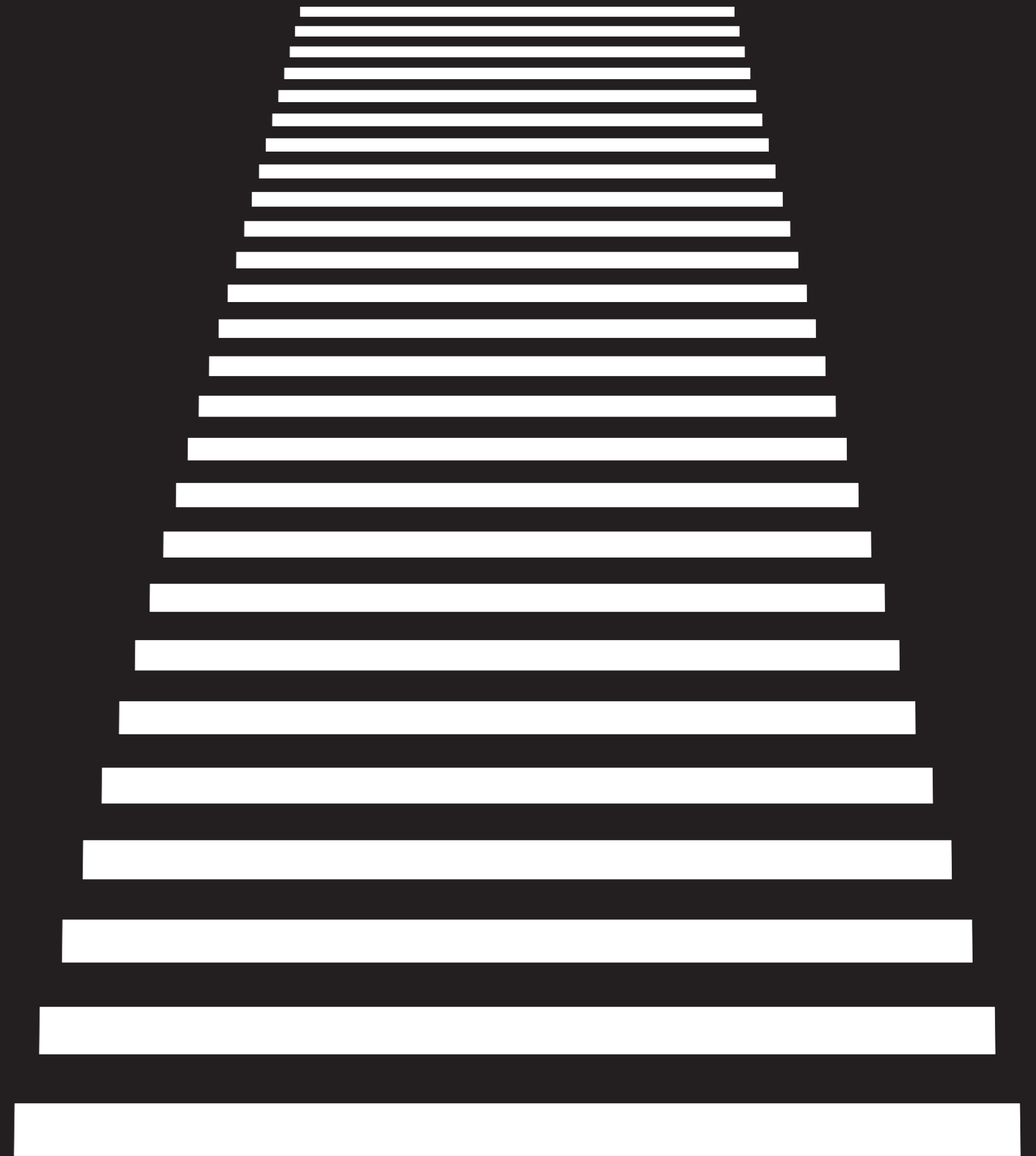


“Beauty is Truth.”

Is written on the Temple door
as you enter.

“All is Vanity”

Is written on the Temple door
as you leave.





SYMBOLICA

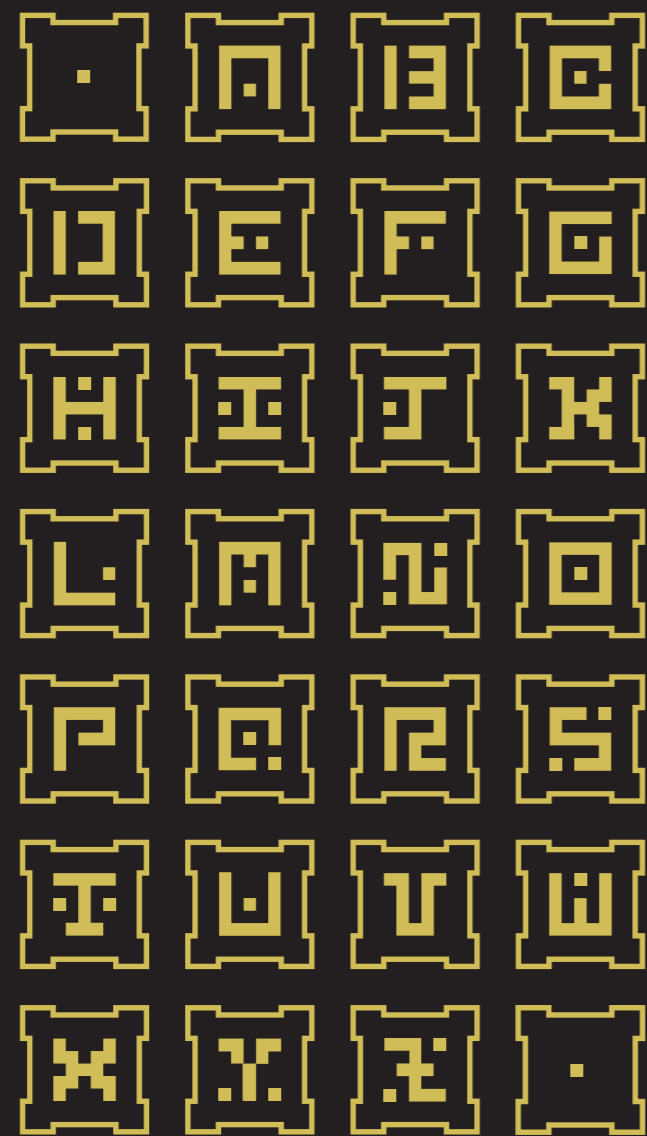
| | | | |
|---------------|--|--------------|--|
| Night and Day | | Imago Templi | |
| Culmen Terrae | | Ecclesia | |
| Crucem | | Lotus | |
| Globus | | Sphinx | |
| Jerusalem | | Pyramide | |



SYMBOLICA

| | |
|-------------------|--|
| The Death | |
| The Pilgrim | |
| The Book | |
| The Wind | |
| The Labyrinth | |
| The Eagle | |
| The Owl | |
| The Middle World | |
| The Song Of Light | |
| The End | |
| The Cup | |
| The Temple | |

ALFABET



ACKNOWLEDGMENTS

Grateful appreciation is acknowledged
to GIOACCHINO CIPOLLA and FRANCO BATAZZI for Artistic and Technologies skills.
To ANDREA LANZINI for 3d models and graphic design.
To FRANCESCA TADDEI and NICOLA DEL LUNGO for 3d models and graphic design.
To GEORGE BISACCA, JEREMY JENNINGS and ALESSANDRO VENDASI for their assistance in editing.

To ANDREA PANCONESI for his support.
Without his help this project would not have come to the light.

BIOGRAPHY

IZNAV ORUAM was born in Florence in 1951.
Attended University of Florence where he studied Philosophy and Literature.
He has traded and made jewellery in Zuni and Navajo Indian reservation of New Mexico and Arizona,
In New York on Madison Avenue and as street artist in San Francisco.
He owned a jewelry manufacturing company in Florence for thirty years.
He learned the art of decoration in Paris, The mechanics technology in Florence,
the art of glass beads in Venice, the Symbolism in India.
He is a musician, graphic designer and a writer.
This collection designed in 1985 represents some of the major archetypes
of the Mediterranean and Western traditions.

GIACOMO ARTALE was born in Santa Margherita di Belice, Sicily in 1950.
Attended University of Florence where he studied Architecture and Photography.
From 1990 he lives and works in Milano where he collaborates as a photographer
with fashion magazines and advertising agency.

Printed on black paper,
screen printed, gold foiled print out and handbounded
in Coimbatore By Hi-Teck universal Printer India Limited. .
The photographs are printed with

Printed in 100 copies in August 2010, signed by the author.

COPIE N° /100